

go above and beyond for the children
ABOVE *AND* BEYOND

Annual Report



2018-2019



BUTTERFLY BRIDGE
CHILDREN'S ADVOCACY CENTER
AUTAUGA CHILTON ELMORE

Butterfly Bridge Children's Advocacy Center offers a safe, child-friendly environment to children victimized by abuse or neglect as we provide restoration and justice in their lives.

To Our Community Partners and Supporters:



BUTTERFLY BRIDGE
CHILDREN'S ADVOCACY CENTER

As the Executive Director of Butterfly Bridge Children's Advocacy Center, I am proud to share our Annual Report for year ending September 30, 2019. In looking through this report you will notice the many vital services that we provided across our service area last year. 376 children walked through our doors for the first time due to allegations of abuse and started their journey to healing. We worked diligently with our community partners in a collaborative effort to minimize any further trauma to the child and family. We know that this joint effort results in the best possible outcomes for children and families during their most stressful, confusing times.

Last year was a year of introspection. Through a full strategic planning process, we outlined what needs to change or be enhanced so we have a strong infrastructure, programming, staff, and governing body. You will see our strategic goals outlined in this report.

Looking ahead to new challenges is important but stopping to take a look at what we have already accomplished is heartening. The work we do is challenging. The stories we hear are often heart breaking. The fact that we can be the positive force to help children and their families is truly what drives us forward and makes it all worthwhile. We thank YOU for supporting our work and allowing us to go ABOVE and BEYOND for the children of Chilton, Autauga, and Elmore counties.

For the children,

Jana Zuelzke



FINANCIALS...

ASSETS – Year ending September 30, 2019

CURRENT ASSETS

Savings (Rainy Day Fund)	\$	50,098.00	
Operating	\$	61,778.00	
TOTAL CURRENT ASSETS			\$111,876.00

PROPERTY & EQUIPMENT

Office Furniture	\$	5,531.00	
Other Equipment	\$	23,272.00	
	\$	28,803.00	
Less: Accumulated Depreciation		(\$13,696.00)	
			\$15,107.00

OTHER ASSETS

Intangibles	\$	15,010.00	
Accumulated Amortization	\$	(\$9,095.00)	
TOTAL OTHER ASSETS			\$5,915.00

TOTAL ASSETS \$132,898.00

LIABILITIES & NET ASSETS

941 Taxes Payable	\$	3,660.00
State W/H Payable	\$	3,757.00
SUI Payable	\$	20.00
Credit Card Payable	\$	(87.00)

TOTAL CURRENT LIABILITIES **\$7,350.00**

NET ASSETS

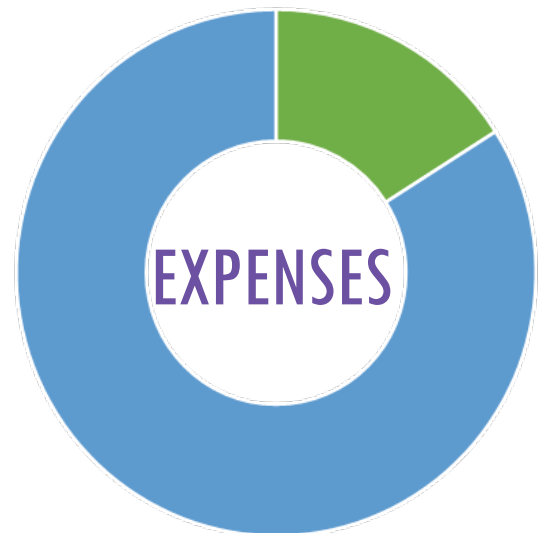
Without Donor Restrictions	\$	125,548.00
With Donor Restrictions	\$	0.00

TOTAL NET ASSETS \$125,548.00

TOTAL LIABILITIES AND NET ASSETS \$132,898.00



15% SPECIAL EVENTS
27% CONTRIBUTIONS
57% GOVERNMENT AFFILIATED



16% SUPPORTING SERVICES
84% PROGRAM SERVICES

5,423 SERVICES PROVIDED



396

FORENSIC
INTERVIEWS



2,344

ADVOCACY
SERVICES



1,549

THERAPY
SESSIONS



36

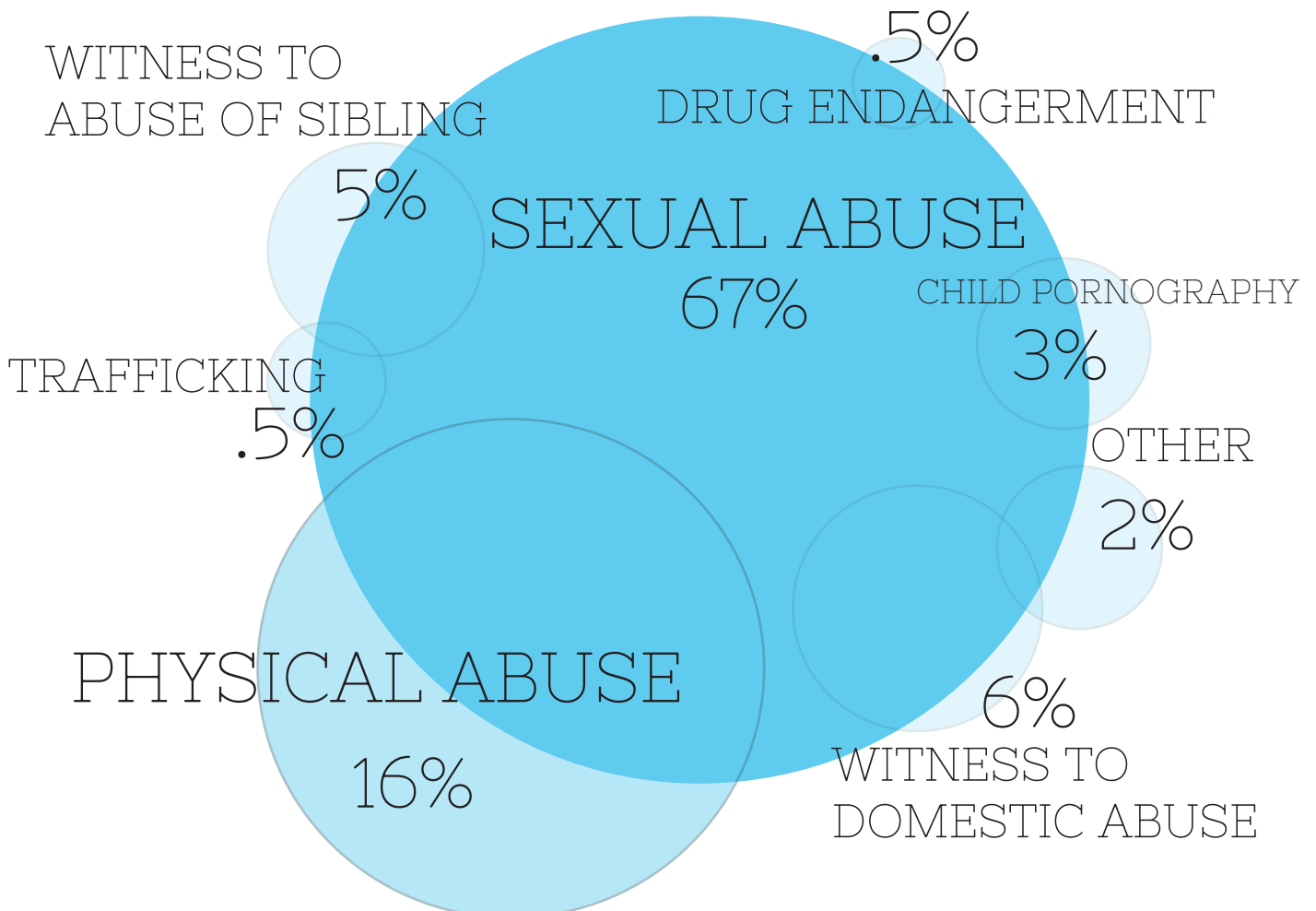
MDT
MEETINGS



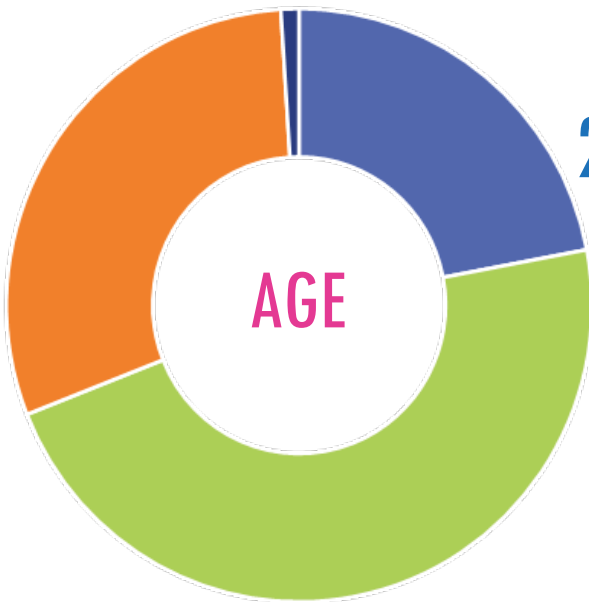
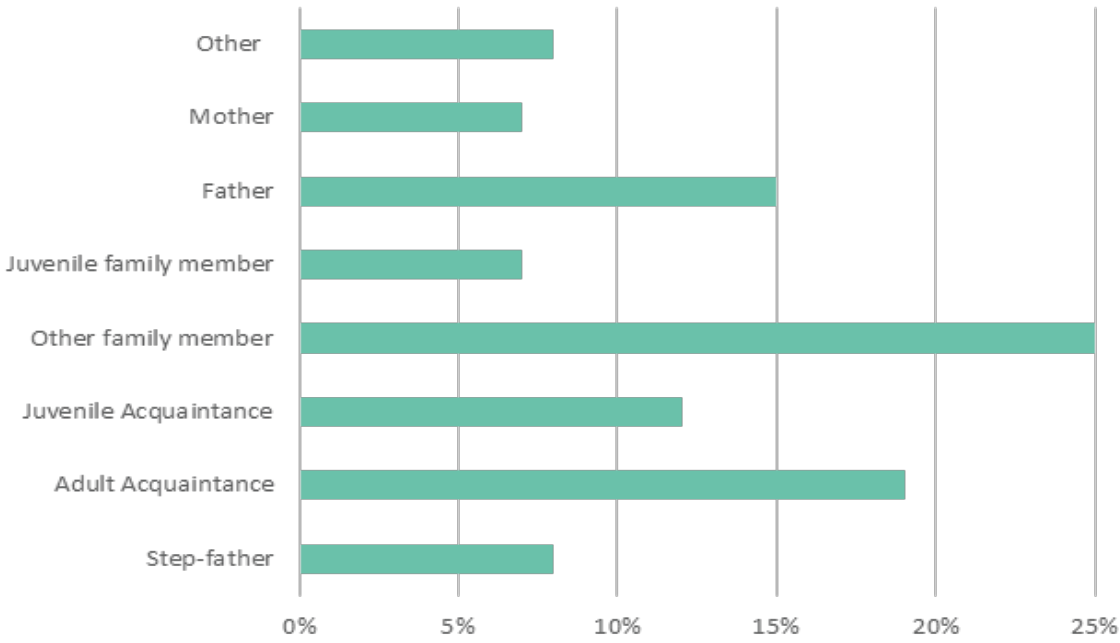
1098

CASE
REVIEWS

REASONS FOR REFERRAL

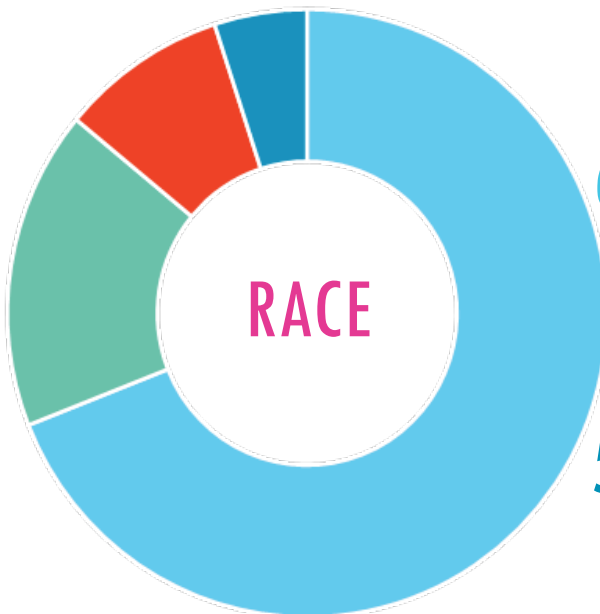
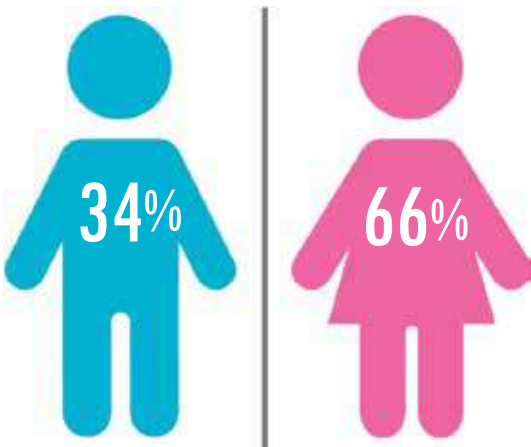


RELATIONSHIP TO OFFENDER



22% 6 & UNDER
 47% 7-12 YRS
 30% 13-16 YRS
 1% 18 & OLDER

GENDER

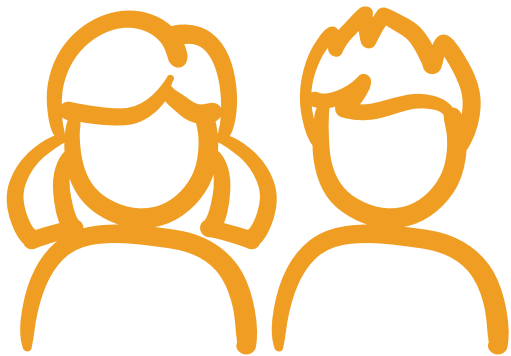


69% WHITE
 17% BLACK
 9% HISPANIC
 5% OTHER

IMPACT/OUTREACH

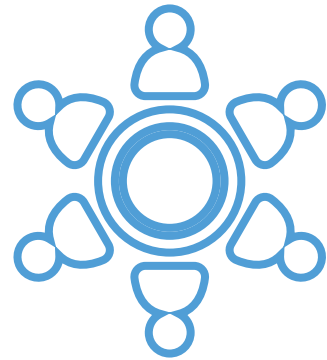


Butterfly Bridge CAC staff provide free training and education on child abuse related topics to the community and to child abuse professionals.



200

children served



1500

Community Professionals
Trained



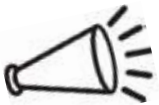
= **680**

110

Parents/Caregivers
Trained

Other Child Abuse
Presentations

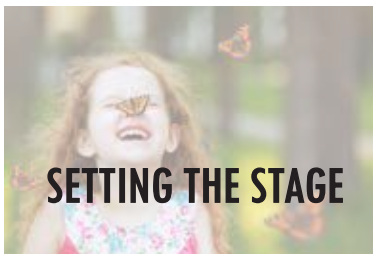
= **820**



4,000

people reached





SETTING THE STAGE

Improving our brand & increasing community awareness



TOGETHER WE STAND

Solidifying the Multi-Disciplinary Team & partnerships



NUTS & BOLTS

Increasing service capacity & combating vicarious trauma



BUILDING FOR THE FUTURE

Determining BBCAC's future in all counties in service area



STRENGTHENING THE FOUNDATION

Building the best Board of Directors for our future

STRATEGIC PLAN 2020-2025

MISSION

Butterfly Bridge Children's Advocacy Center offers a safe, child-friendly environment to children victimized by abuse or neglect as we prove restoration and justice in their lives.

VISION

The vision of BBCAC is that every abused child will receive the services, advocacy, and support needed to move beyond the abuse to a life full of possibilities.



BUTTERFLY BRIDGE
CHILDREN'S ADVOCACY CENTER

AUTAUGA CHILTON ELMORE

Shannon Welch – President

Samantha Sims – Vice-President

Shawn Daley (Elmore) - Treasurer

Rosalyn Dixon - Secretary

Miranda Chandler

Carrie Easterling

Hal Harrison

Jeff Herron

DJ Hines

Kim Kervin (Autauga)

Jaclyn Porter

Riley Yeargan



AUTAUGA COUNTY ADVISORY

Greg Bowen

Robin Davies

Kyle Glover

Tracy Hanners

Kim Kervin

Mike Lamar

Ashley Pruitt

ELMORE COUNTY ADVISORY

Ashley Brown

Shawn Daley

Marissa Dugan

Ryan Exum

Brenda Kelley

Stephanie Lanicci

Penny Nichols

**BOARD
OF DIRECTORS**

Staff



Providing security, restoration, and justice at Butterfly Bridge Children's Advocacy Center is a team effort.



Jana Zuelzke
Executive Director/ Child Forensic Interview Specialist



Emily Hutcheson
Assitant Director/ Child Forensic Interview Specialist



Bethany Chappell
Therapist/ Forensic Interviewer



Brittani Ellison
Event, Development & Outreach Coordinator



Christie Hall
Therapist/ Forensic Interviewer



Elizabeth Dawson
Family Advocate/ MDT Coordinator



Erin Ward
Therapist/ Forensic Interviewer



LaChandra Prim
Therapist/ Forensic Interviewer



Lisa Nicholas
Bookkeeper



Tracey Johnson
Family Advocate/ MDT Coordinator

2018-2019 DONORS

INDIVIDUAL DONORS

Abbett Household
Amber Darnell - Realty South
Andrews Household
Arnold Household
Bastedo Household
Bates Household
Bentley Household
Binkerd Household
Blankenship Household
Bowman Household
Brandy Smith Household
Brannon Household
Brown Household
Burns Household
Carrie Easterling - Real Estate Associates
Chambliss Household
Clark Household
Clemmons Household
Conkle Household
Conlee Household
Daley Household
Darnell Household
Deal Household
Dennis Household
Deramus Household
Dixon Household
Donegan Household
Douglass Household
Dozier Household
Dugan Household
Erric Price Household
Faulkner Household
Forrester Household
George Household
George Household
Gibson Household
Glackmeyer Household
Glynn Household
Grant Household
Griffin Household
Guy Household
Hand Household
Hanners Household
Harrison Household
Harry Household
Harwell Household
Hassell Household
Hayes Household
Hays-Foxworth Household
Hill Household
Hines Household
Holly Cowart Household
Humphries Household
Huntley Household
Hurley Household
Hutcheson Household
Ivey Household
Jeremy Thompson Household
Jimmy Parnell Household
Jones Household
Kasey Moore Household
Kelley Household
Kennedy Household
Kloess Household
Lanicci Household
Lawrence Household
Linna Household
Lisa Wilson Household
Mahan Household
Mallard Household
Marcus Household
Martin Household
Martin Household
McAuley Household
McKinnon Household
McRae Household

2018-2019 DONORS

Meyer Household
Miller Household
Minton Household
Mitchell Household
Moore Household
Nicholas Household
Nichols Household
Owen Household
Parnell Household
Payne Household
Peel Household
Penney Household
Penton Household
Pinkerton Household
Pitts Household
Player Household
Polson Household
Powell Household
Powers Household
Puckett Household
Pullin Household
Ramirez Household
Ray Household
Realty Connection
Realty South - Lucinda Champion
Rhonda McGough Household
Rich Household
Risher Household
Robert & Brenda Kelley Household
Robinson Household
Rodriguez Household
Rogers Household
Royal Household
Samantha Hill Household
Scott Household
Shaner Household
Shearon Household
Sims Household

Singleton Household
Skinner Household
Smith Household
Sproull Household
Stewart Household
Story Household
Taft Walley - State Farm Insurance
Tate Household
Thomas Household
Trice & Johnnie Nichols Household
Watson Household
Welch Household
Wyndall Hutcheson Household
Yeargan Household

Business, Organization & Foundation Donors

334 Prattville's Gym
A&J Carwash
Adrienne's Downtown Bar
Alabama Ag Credit
Alabama Network of CACs
Alabama Power Foundation
Alabama Power Service Organization
Alfa Foundation
Allen Trucking
Amazing Grace Girls
ASE Credit Union
AVO Rentals
Azar Law Office, LLC
Barry's Furniture - Jasper
Baugh Ford
BB & T
The Caring Foundation - Blue Cross Blue Shield
The Coach's Corner

2018-2019 DONORS

The Coosa Cleaver
The Wash
Bertolone Inc.
Brasfield & Gorrie, LLC
Candy Corner
Carter Enterprises LLC
Central Alabama Community Foundation
Central Alabama Electric Cooperative
Charles Spigner Trucking
Chick-fil-A
Chilton County High School
Chilton Family Medicine
Cindy Porter - Realty South
Clanton Mini Storage
Clanton Pediatric Associates, PA
Concrete Plus
Custom Floor Covering LLC
Dash Compliance
Dixie Owl Creations
DJ2 Entertainment
Donald Vinzant Family Foundation
First Community Bank of Central Alabama
Four Macon LLC
Fucich LLC
Goodwyn, Mills, Cawood
Guardian Credit Union
H&R Block
Hamilton Mortgage
Heart of Dixie Parts and Equipment
Hotel Wetumpka AL, LLC
Hyundai Motor Manufacturing Alabama
Information Transport Solutions
Integrated Transport Solutions
International Paper
International Paper Foundation
Jackson & Jackson
Jackson Thornton & Co. P.C.
James Wadsworth Foundation
Jemison Elementary School
Jones Drugs, LLC
Josh Inman - Jackson & Jackson
Joy Tribe
Kountry Kitchen
Lake Mitchell Realty
Launch Trampoline, LLC
Liveoak Agency
Lockheed Martin
Main Street Cafe
Maplesville High School
Marion Bank & Trust
Mark's Service Center & Body Shop, Inc.
Martin Funeral Home
Matt Benson LLC
McGlou Properties
Milo's
Modern Solutions
Moore Family Foundation
Neighborhood Grill
Nolen Land and Timber, Inc.
Parnell Inc.
Pasta Pizzeria & Grill
Peach City Pawn
People's Pie
Petty Line
Pies By Mike
Puroclean Disaster Restoration Services
P'zazz Art Studio
Realty Connection
Redzone Sports Grill
River Bank & Trust
River Region Frozen Treats, LLC
Riverside Chevrolet, Inc.
Senior Connection
Shoney's/Inn of Clanton
Southeastern Land Group
Southern Dixie Auto Repair
State Farm Foundation

2018-2019 DONORS

Steel Built Systems, LLC
Stokes Automotive
Strock Insurance Agency, LLC
Synovus
Trendy Chic
Trustmark National Bank
Vogel & Associates PC
W. Kendrick James, Attorney at Law
Walmart Foundation
Warren Averett
Wetumpka Window Tinting
Whataburger

CHURCHES

Bell Lane Baptist Church
Bethsalem Baptist Church
Chilton Baptist Association
First Baptist Church of Prattville
First Presbyterian Church
First United Methodist Church Women's Group
Four Corners Country Church
FUMC - 4:19 Bass Club
God's Anointed Church
Mt. Nebo Methodist Church
Trinity United Methodist Women
United Methodist Men - CFUMC
United Methodist Women
Verbena United Methodist Church

CIVIC CLUBS

Bell Lane Baptist Church
Bethsalem Baptist Church
Chilton Baptist Association
First Baptist Church of Prattville
First Presbyterian Church
First United Methodist Church Women's Group
Four Corners Country Church
FUMC - 4:19 Bass Club

Chilton County Retired Educators
Millbrook Area Chamber of Commerce
Millbrook Civitan Club #3976
Prattville Lions Club
Prattville Rotary Club
Prattville Service League
Preceptor Alpha Eta / Beta Sigma Phi
River Region United Way
Wetumpka Lions Club
WoodmenLife Chapter 322 Clanton

LOCAL GOVERNMENT

Autauga County Commission
Autauga County Juvenile Court Services
Chilton County Commission
City of Clanton
City of Jemison
City of Millbrook
City of Prattville
City of Wetumpka
Elmore County Commission
Elmore County Juvenile Court
Elmore County Sheriff's Office Pistol
Permit
Employees of the Chilton County Dept. of
Human Resources
Montgomery Police Department
Town of Coosada
Town of Eclectic
Town of Maplesville
Town of Thorsby
Wetumpka Police Department

WE APPRECIATE EACH GIFT AND
STRIVE FOR ACCURACY IN DONOR
RECOGNITION. IF THERE IS AN
ERROR, PLEASE CONTACT US
AT 205-755-4205 OR
INFO@BUTTERFLYBRIDGECAC.ORG



Help Us Put
Your
Compassion
into ACTION



Every day children victimized by abuse come to the Butterfly Bridge Children's Advocacy Center where they find caring professionals and community partners who dedicate themselves to helping them through the nightmare of abuse and neglect. The Center provides a friendly environment where children can safely tell their story and receive the support they need. Within the Center, families find support, resources, and most importantly a place where healing begins.

*Your Gift in 2020,
big or small, will
be the Roots to
give children their*

wings

